



# What's new at your local college!

## Inside...

Skills Provider of the Year 2024  
New Year Courses for Adults  
£1.5m Campus Investment  
Hear from our Students  
Courses for School Leavers  
FREE College Transport



**BIBAs**  
Winner

## What's new at your local college!

Dear Local Resident

I wanted to share some of the exciting things that have happened over the last 12 months at your local college. At West Lancashire College we provide opportunities for you, whether you are a school leaver just embarking on your new career or an adult looking to take that next step to a new role, gain new skills or simply want to learn for pleasure we are here to support you.

At West Lancashire College, we offer a range of Vocational, Technical, T Level, Apprenticeship, Access to Higher Education and part-time courses. Our students can access excellent support and great enrichment opportunities to enhance their study. To add to this, we have outstanding facilities, a designated FREE college coach for students travelling from Liverpool, Southport, Aughton, Burscough, Newburgh, Parbold, Skelmersdale Ormskirk and Wigan, fabulous wrap around support and great connections with employers and universities.

We are an award-winning college; In March 2024, our students won The Lancashire Colleges Skills Competitions for both Early Years and Engineering categories, and in September 2024 we were delighted to be awarded 'Skills Provider of the Year' at the BIBA's Lancashire.

We recently received over £1.5m worth of funding from the Local Skills Improvement Fund (LSIF) and government T Level funding to further enhance our campus. This additional funding has allowed us to develop facilities for the benefit of local students including a brand-new eatery in The Diner, more social spaces, refurbishments to Digital classrooms and the creation of a mock primary setting, hospital ward and Apprentice style board room!

For the second year running, we have also secured funding through Turing for educational international trips to some fantastic destinations where full time younger learners carry out their industry placements including Germany, Spain, Malta, and Cyprus! This funding has enabled us to offer these trips all expenses paid, which I am sure you will agree is a fantastic opportunity.

I am enormously proud of our college, our staff, and the fabulous experience we offer students at West Lancs. The quality of teaching and learning is second to none and our excellent wrap around support ensures our students have the very best opportunity to succeed.

Please do read through our brochure, and we would love to invite you to our forthcoming Open Event on Monday 3 February so you can see for yourself the amazing opportunities waiting for you at West Lancashire College.

I do hope to see you in college very soon, in the meantime, if you have any questions, our team of advisers will be more than happy to help, they can be contacted on 01695 52300 or email [enquiries@westlancs.ac.uk](mailto:enquiries@westlancs.ac.uk)

Best wishes

**Gareth Sutton**  
Vice Principal



# West Lancashire College win Skills Provider of the Year!

West Lancashire College has recently become the proud winner of the BIBAs 2024 Skills Provider of the Year Award.

Run by the North & Western Lancashire Chamber of Commerce, the Be Inspired Business Awards (BIBAs) is Lancashire's longest running, largest and most prestigious business awards ceremony, and are a celebration of the county's best performing companies and entrepreneurs.

Our college has been on a journey to Outstanding since it's last Ofsted inspection in January 2022, where we were graded 'Good'. We offer a wide range of BTEC and T Level qualifications, Technical and Apprenticeship courses, plus online and in person professional qualifications for adults.



## What's new at your local college!



Based in the heart of Skelmersdale's town centre, our college, which is part of NCG, one of the largest education and training organisations in the UK, has a mission of enabling social mobility and prosperity through exceptional education, something we strive to achieve every single day.

So what makes West Lancashire College Skills Provider of the Year? We put our success down to the combination of a fantastic team of dedicated staff who all have one shared goal; to create the very best opportunities for our students so that they have better life chances and are best placed to achieve their potential in today's competitive world. These opportunities are created via outstanding employer links, ongoing investment into facilities and continuous focus on the levelling up agenda.

Gareth Sutton, Vice Principal at the college said

***“We are enormously proud of our college and staff, the excellent support we provide to our students and the great opportunities we offer, and we are***

***honoured to achieve this prestigious award which is testament to everyone who works at West Lancs.***

***“This year has already been a fantastic year, in March our students won The Lancashire Colleges Skills Competitions for both Early Years and Engineering categories, so winning Skills Provider of the Year at the iconic Blackpool Tower Ballroom has been the icing on the cake. We look forward to continuing our work to offer the local community of West Lancashire the very best educational experience around.”***

If you would like to find out more about West Lancashire College and the opportunities available, please contact us on **01695 52300**, email **enquiries@westlancs.ac.uk** or go to **westlancs.ac.uk**

# What Our Students Say



**Katie**

Former Burscough Priory High Student

Studying T-Level Supporting Adult Nursing

***"I want to be a Nurse, so choosing this course is perfect to get me into university to***

***qualify. West Lancashire College gives me opportunities to develop my confidence and lots of enrichment activities. I use the free college transport to get to and from college which is great I don't have to worry about costs. I am excited to start my placement which will give me valuable experience for my future. We have recently visited Chorley Hospital which was really interesting, and we spoke to people in different roles within the NHS."***



**Henry**

Former Burscough Priory High Student

Studying T-Level in Design and Development for Engineering and Manufacturing

***"Exploring careers in Engineering is part of our course, learning***

***about the different jobs available helps me to think about my next steps. We are lucky here at West Lancs as the college is always looking for new employers to support our learning. So far, we have had guest speakers from Sellafield, Elements Material Technology, Tenet Nuclear Consultancy and we also visited MACH 2024 at the NEC in Birmingham.***

***In March 2024 myself and 3 other students were selected to represent West Lancashire College at the Lancashire Skills Competitions, it was great experience and best of all we were overall winners in the Engineering category."***



**Milan**

Former Our Lady Queen of Peace pupil

Studying Sports Extended Diploma Level 3

***"I chose this course because I was interested in pursuing a career in physiotherapy.***

***The range of job opportunities and work experience really stands out as there is an abundance of work experience available. West Lancs also offers enrichment such as the football team. After college I plan to go to a sports university like UCFB to achieve my career aspiration of becoming a Sports Therapist."***

# 100%\* Pass rate

in 45 programme areas

*\*proachieve data 2024*

# £1.5m funding for investment into our campus

We are delighted to have recently been awarded £1.5m worth of funding from the Local Skills Improvement Fund (LSIF) and government T Level funding to further enhance our beautiful campus in Skelmersdale town centre.

We are already lucky enough to have some fantastic facilities including The School of Science, The Hair & Beauty Lounge, Advanced Construction and Engineering Centre and the Sports Performance Lab and Electrical Centre, and this additional funding has meant that we have been able to develop our facilities further for the benefit of local students.

Since receiving the funding we have improved various teaching areas as well as developed an employability hub which incorporates innovative meeting and delivery spaces, refurbished our social spaces for students including study pods, relaxed seating areas and a modern dining experience, plus opened a brand-new visitor reception area.

Gareth Sutton, Vice Principal said "We were extremely grateful to be awarded the LSIF and T Level funding and have invested into areas that will have the most impact on our student experience. We are proud to be able

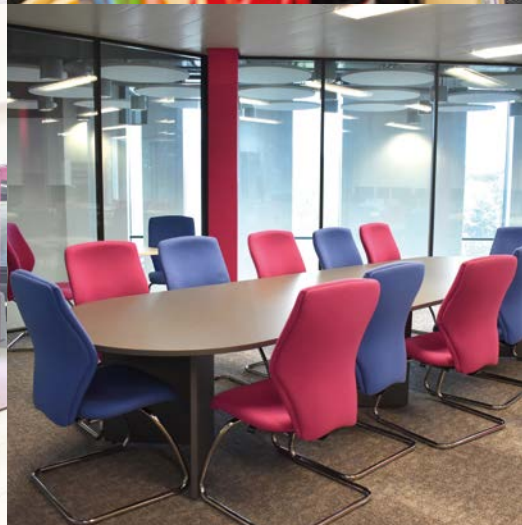
to offer some of the very best teaching facilities and current technologies around and would love the local community to visit the college and see firsthand. Please do come along to our forthcoming Open Event on Monday 3 February 2025, 4.30pm-7pm, or if you would like a personal campus tour, please contact us and we will happily book a slot."

The colleges Digital classrooms now boast state-of-the-art computer equipment which includes Stone Magma High Performance Workstations (Assu B660M-A) with a number of bespoke aspects for each individual computer, including fully modular quiet PSU and Windows 11 Home Advanced.

The Health Care department now has a real-life hospital ward for students to train in, complete with reception, waiting area and hospital beds. Early Years students can now train in a mock primary school setting, a specialist practical classroom that contains children's furniture and a wide range of children's teaching aids that will support and inspire our students thinking.

Plus, there has been investment for Engineering students with the addition of a 3D printing suite, and Business students now learn in a brand-new Apprentice style board room, complete with the latest pcs, meeting spaces and boardroom table.

You can view our facilities yourself at one of our forthcoming Open Events, Monday 3 February or Thursday 1 May 2025, 4.30pm-7pm.



# In person Courses

Whether you want to change your career, gain qualifications, skills and knowledge needed to fulfil a lifelong ambition, or would just like to study for leisure, we have a course for you this New Year.

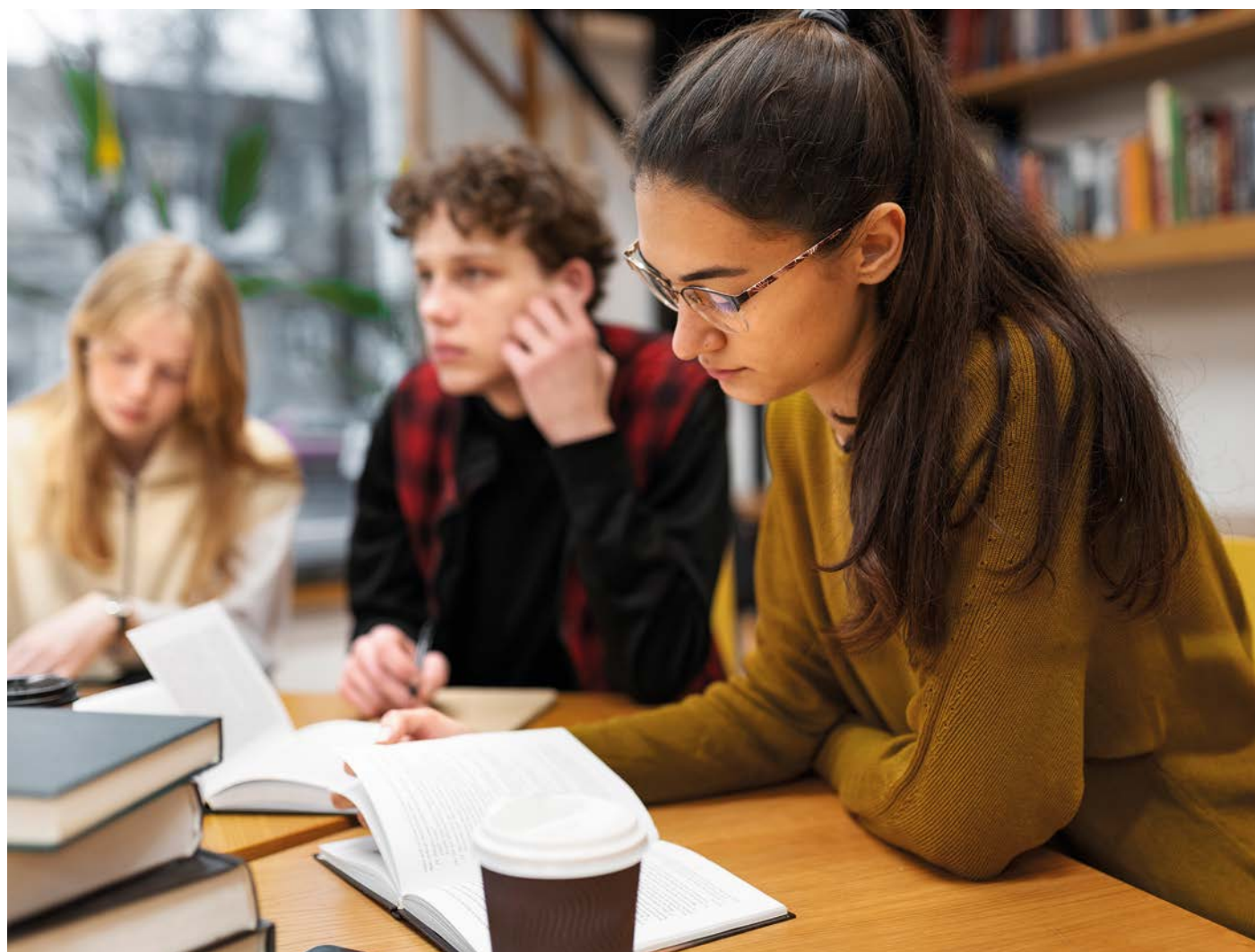
Course Title	Day	Time	Duration	Fee	Start Date	Delivery
<b>Arts and Crafts</b>						
Arts and Crafts	Tue	10am-12noon	4 wks	FREE	28/01/25	In Person
Ceramics	Tue	1pm-3pm	4 wks	FREE	28/01/25	In Person
<b>Beauty Therapy</b>						
Nail Technology Level 2	Mon	9.30am-3.15pm	17 wks	£486.00	27/01/25	In Person
<b>Construction</b>						
Property Maintenance Introduction	Tue	6pm-8pm	7 wks	£45.00	28/01/25 29/04/25	In Person
<b>English &amp; Maths</b>						
Maths Functional Skills	Tue	6pm-8pm	35 wks	FREE	27/01/25	In Person
Maths Functional Skills	Wed	11am-1pm	35 wks	FREE	27/01/25	In Person
Maths Functional Skills	Thur	9am-11am	35 wks	FREE	27/01/25	In Person
English Functional Skills	Wed	6pm-8pm	35 wks	FREE	27/01/25	In Person
English Functional Skills	Wed	9.30am-11.30am	35 wks	FREE	27/01/25	In Person
Story Sacks	Various	Various	4 wks	FREE	27/01/25	In Person



Course Title	Day	Time	Duration	Fee	Start Date	Delivery
<b>ESOL</b>						
ESOL Level 1	Wed	6pm-8pm	35 wks	FREE	27/01/25	In Person
ESOL Level 1	Thur	1pm-3pm	35 wks	FREE	27/01/25	In Person
<b>Motor Vehicle</b>						
Females in Motor Vehicle	Tue	6pm-8pm	2 wks	£45.00	28/01/25	In Person
<b>Teaching Assistants</b>						
Supporting Teaching and Learning Level 2 Certificate	Fri	9am-4pm	17 wks	£675.00	03/02/25	In Person

**How do I enrol?**

For further details on how to enrol please go to **page 12** or contact course enquiries **01695 52300** [enquiries@westlancs.ac.uk](mailto:enquiries@westlancs.ac.uk) or visit [www.westlancs.ac.uk](http://www.westlancs.ac.uk)



# Distance learning Courses

Online learning is a great way for people to upgrade their skills at any time, we are therefore delighted to offer a range of online training courses, designed to help you develop new skills or build on existing ones. Available on a rolling basis, our qualifications are delivered by distance learning and offer nationally recognised Level 2 and 3 qualifications for students aged 19 or over.

The courses are great for evidencing your competency to employers, will further your personal and professional development and will give you the relevant skills, knowledge and understanding leading to career progression, a career change and improved employment prospects.

Counselling & Advice Courses	Day	Time	Duration	Fee	Start Date	Delivery
Counselling Skills Level 2 Certificate	Flexible	Flexible	12 wks	Fully Funded**	Flexible	Online
Counselling Skills Level 3 Diploma	Flexible	Flexible	26 wks	Fully Funded**	Flexible	Online
Information, Advice or Guidance Level 2 Certificate	Flexible	Flexible	12 wks	Fully Funded**	Flexible	Online
Understanding Domestic Abuse Level 2 Certificate	Flexible	Flexible	12 wks	Fully Funded**	Flexible	Online

Business & Digital Courses	Day	Time	Duration	Fee	Start Date	Delivery
Creating a Business Start-Up Level 2 Certificate	Flexible	Flexible	12 wks	Fully Funded**	Flexible	Online
Digital Promotion for Business Level 2 Certificate	Flexible	Flexible	12 wks	Fully Funded**	Flexible	Online
Equality and Diversity Level 2 Certificate	Flexible	Flexible	12 wks	Fully Funded**	Flexible	Online
Lean Organisation Management Techniques Level 2 Certificate	Flexible	Flexible	12 wks	Fully Funded**	Flexible	Online
Principles of Business Administration Level 2 Certificate	Flexible	Flexible	12 wks	Fully Funded**	Flexible	Online
Principles of Cyber Security Level 2 Certificate	Flexible	Flexible	12 wks	Fully Funded**	Flexible	Online
Principles of Team Leading Level 2 Certificate	Flexible	Flexible	12 wks	Fully Funded**	Flexible	Online
Principles of Working with Individuals with Learning Difficulties Level 2	Flexible	Flexible	12 wks	Fully Funded**	Flexible	Online
Understanding Business Improvement Techniques Level 2 Certificate	Flexible	Flexible	12 wks	Fully Funded**	Flexible	Online
Understanding Mental Health First Aid Mental Health Advocacy in the Workplace Level 2 Certificate	Flexible	Flexible	12 wks	Fully Funded**	Flexible	Online

## What's new at your local college!

Health, Care & Nutrition	Day	Time	Duration	Fee	Start Date	Delivery
Awareness of Mental Health Problems Level 2 Certificate	Flexible	Flexible	12 wks	Fully Funded**	Flexible	Online
Safe Handling of Medication Level 2 Certificate	Flexible	Flexible	12 wks	Fully Funded**	Flexible	Online
Principles of Dementia Care Level 2 Certificate	Flexible	Flexible	12 wks	Fully Funded**	Flexible	Online
Understanding Cancer Support Level 2 Certificate	Flexible	Flexible	12 wks	Fully Funded**	Flexible	Online
Understanding Domestic Abuse Level 2 Certificate	Flexible	Flexible	12 wks	Fully Funded**	Flexible	Online
Understanding Mental Health Level 3 Certificate	Flexible	Flexible	16 wks	Fully Funded**	Flexible	Online
Understanding Nutrition and Health Level 2 Certificate	Flexible	Flexible	12 wks	Fully Funded**	Flexible	Online

Caring for Children & Young People	Day	Time	Duration	Fee	Start Date	Delivery
Introducing Caring for Children and Young People Level 2 Certificate	Flexible	Flexible	12 wks	Fully Funded**	Flexible	Online
Introduction to Neuroscience in Early Years Level 2 Award	Flexible	Flexible	12 wks	Fully Funded**	Flexible	Online
Safeguarding and Prevent Level 2 Certificate	Flexible	Flexible	12 wks	Fully Funded**	Flexible	Online
Understanding Adverse Childhood Experiences Level 2 Certificate	Flexible	Flexible	12 wks	Fully Funded**	Flexible	Online
Understanding Autism Level 2 Certificate	Flexible	Flexible	12 wks	Fully Funded**	Flexible	Online
Understanding Autism Level 3 Certificate	Flexible	Flexible	16 wks	Fully Funded**	Flexible	Online
Understanding Behaviour that Challenges Level 2 Certificate	Flexible	Flexible	12 wks	Fully Funded**	Flexible	Online
Understanding Children and Young Peoples Mental Health Level 2 Certificate	Flexible	Flexible	12 wks	Fully Funded**	Flexible	Online
Understanding Specific Learning Difficulties Level 2 Certificate	Flexible	Flexible	12 wks	Fully Funded**	Flexible	Online

### How do I enrol?

For further details on how to enrol please go to page 12 or contact course enquiries **01695 52443** [distancelearningiag@westlancs.ac.uk](mailto:distancelearningiag@westlancs.ac.uk) or visit [www.westlancs.ac.uk](http://www.westlancs.ac.uk)

*\*\*Courses may be Fully Funded if you are on a low income, on benefit or unemployed. If you are aged 19-23 and wish to study a Level 2 qualification, in order to be eligible, you must also have already achieved a full Level 2 qualification or above previously e.g., 5 GCSEs Grades A-C, BTEC Level 2 etc.*

# How to enrol

## In Person Courses

Simply choose from our wide range of courses listed throughout our Course Guide and give us a call to book an enrolment slot on **01695 52383** or email **admissions@westlancs.ac.uk**.

Enrolment slots are available from **Monday 20 to Friday 24 January 2025**, 10am-3pm, with late night appointments available on **Tuesday & Wednesday 21 & 22 January 2025**, 5pm-7pm.

Please note it is important that you arrange an appointment before attending college.

## Distance Learning Courses

Choose from our wide range of distance learning courses listed throughout this Guide, if you need to find out more course detail please go to [www.westlancs.ac.uk/study-areas/online-courses](http://www.westlancs.ac.uk/study-areas/online-courses) or contact Course Enquiries on **01695 52443 / distancelearning@westlancs.ac.uk**

Once you have decided what to study, you can enrol online as follows:

- To enrol for one of our online courses please take the following steps:
- Go to [www.westlancs.ac.uk](http://www.westlancs.ac.uk)
- Select Apply>Adult (please note all online courses start with ONLINE in the drop down list)
- Apply for your chosen course
- Once we receive your application, you will be sent a link to complete the enrolment process to your course

## What Will I Pay?

Many of our courses are funded\* or have no upfront costs. The cost of your course depends on your individual circumstance and there are lots of funding opportunities available to help pay for your course. If you do have to pay for your course you could spread the payments with our instalment plan. If you live outside of Lancashire, due to recent changes in Government funding you will be eligible to pay the full course fee

and all associated support costs (funding may be available to those living in Liverpool City Region). This will be discussed with you at your enrolment appointment; payment instalments are available.

## What Do I Bring to Enrolment?

### Payment

We accept payment by credit or debit card. Course fees are payable at enrolment. If the annual course fee payable by you is over £200, you may be able to pay by instalments (subject to agreement at enrolment). If you wish to request instalment payments, you will be required to sign a Fee Payment Agreement at enrolment if these are agreed and will also need your bank details (account number, sort code and bank address). If your course fee is being paid by a third party (e.g employer) you will be given the appropriate documentation at enrolment. Call **01695 52300** and ask for Learner Services to find out if you are eligible for assistance.

**ENROLMENT ONTO A COURSE CANNOT BE CONFIRMED UNTIL PAYMENT IS RECEIVED.**

### Fee refunds

Where the college has to cancel a course, the college will credit the fee and refund any fee payment to the learner. If the student agrees to an appropriate alternative course, then the original fee payment would be credited against the new alternative course. Students may apply to the college for a refund or partial refund of tuition fees if there are extenuating circumstances.

### Additional course related costs

Some courses require you to purchase the appropriate kit, uniform or materials. You will be advised on how to order and costs prior to the start of the course.

### Identification

The Learning Records Service requires Learners to verify their identity at enrolment, therefore when enrolling for your course you will need to bring original copies of one of the following documents with you. If you enrol over the phone, you will be required to bring this identification with you to collect your ID card before you start your course.

- Passport • Photo Driving Licence • Armed Forces Service ID • National Insurance Card • Certificate of Entitlement to Funding • Bank Credit/Debit Card • Your West Lancashire College Student ID Card

### Settled status

Funding for Further Education courses has changed post-Brexit. The EU Settlement Scheme is designed to offer EU, EEA and Swiss nationals and their eligible family members living in the UK, the opportunity to protect their residence and travel rights in the UK. The application is free and the process is relatively straight forward. If you are an EU/EEA/Swiss national living in the UK and wish to study at West Lancashire College, you will be required to prove your settled or pre-settled status. Further details are available from Learner Services, please contact **01695 52393**.

### Proof of address

To enrol you will be required to bring in proof of address, this can be a utility bill or bank statement. This is in addition to and support of identification evidence.



### Previous qualifications

If you are aged 16-18 you will need to bring proof of your GCSEs and any other qualifications. If you are aged 19+ you will need proof/knowledge of any prior qualifications and for some full-time courses such as Access to Higher Education, you will be asked to provide evidence of certification.

TUITION MAY BE FUNDED FOR LEARNERS WHO	EVIDENCE REQUIRED
16-18 year olds (Funded to those living in all areas)	Identification and GCSE results
Undertaking a First Full Level 2 qualification aged 19-23*	Self-certification to be signed at enrolment
Undertaking a First Full Level 3 qualification aged 19-23*	Self-certification to be signed at enrolment
Aged 19-23 studying a full Level 3 qualification listed as part of the National Skills Fund Initiative*	Self-certification to be signed at enrolment
Aged over 23 and studying a first full Level 3 qualification listed as part of the National Skills Fund Initiative*	Self-certification to be signed at enrolment
Studying English or maths Basic Skills up to and including Level 2	None
Aged 19 or over in receipt of Job Seeker's Allowance including those receiving National Insurance Credits only and Employment Support Allowance (work related activity groups)	Current Letter authorised by the Job Centre (JSA Book not accepted). Bank statement
Aged 19 or over in receipt of UCRED, unemployed and mandated by Job Centre and earning less than £892 per month (All Work-Related Requirements Group, Work Preparation Group and Work-Focused Interview Group)	Current Letter authorised by the Job Centre
In receipt of other State Benefits who are unemployed and wishing to return to work	Income Support - current letter/bank statement Housing/Council Tax Benefit - letter from council or bank statement. Working Tax Credit/Pension Credits - current award notice.
Want to be employed (or progress into more sustainable employment) and earning less than £25,000 annual gross salary	Proof of income eg: individual payslips (3 months), P60 Contract of employment

What's new at your local college!

# Courses for School Leavers



APPLY NOW

We offer a range of T Levels, BTECs, Technical and Apprenticeship courses for school leavers and adults wishing to study full time.

## We offer our younger students:

- Outstanding facilities
- Excellent teaching & learning
- Great results
- FREE\* transport
- Financial\* support packages
- Fabulous national and international trips and visits including Germany, Malta, Dublin, London, Paris, Netherlands and Austria

- Fabulous wrap around support
- Great connections with employers and universities

AND our West Lancashire College Alumni students' progress to some fabulous careers!

*\*Subject to eligibility*



Art & Design Level 2

Art & Design Extended Diploma Level 3

Aspire Programme

Beauty & Hair Introduction Level 1

Beauty Therapy Level 2

Beauty & Therapy Level 3

Business T Level\*

Bricklaying Level 1

Bricklaying Level 2

Bricklaying Level 3

Early Years Practitioner Level 2

Early Years T Level\*

Carpentry & Joinery Level 1

Carpentry & Joinery Level 2

Computing Extended Diploma Level 3

Construction Multi Skills

Digital Production & Design T Level\*

Electrical Installations Level 2

Electrical Installations Level 3

Engineering Level 2

Engineering T Level\*

Food Preparation & Cookery Level 2

Hair & Beauty Introduction Level 1

Hairdressing Level 2

Hairdressing Level 3

Hair & Media Make up Level 2 Diploma

Health & Social Care Level 1

Health and Social Care Extended Certificate Level 2

Health and Social Care National Extended Diploma Level 3

Health T Level\*

Inclusive Learning Programmes

Information, Computing & Technology Extended First Certificate Level 2

Introduction to the Hospitality & Catering Industry Level 1

Motor Vehicle Maintenance Level 1

Motor Vehicle Maintenance Level 2

Motor Vehicle Maintenance Level 3

Plumbing Studies Level 1

Plumbing Studies Level 2

Social Sciences Level 3 (Applied Biology, Criminology and Psychology)

Sports Level 1

Sports & Physical Activity Level 2

Sports & Physical Activity Extended Diploma Level 3

Uniformed Public Services Level 1

Uniformed Public Services Extended Certificate Level 2

Uniformed Public Services Extended Diploma Level 3

\*These courses are for 16-18 year olds only

# Travel to College

**We offer a designated FREE\* college coach service from the following locations:**

**Liverpool** – Kirkby, Aintree, Maghull, Aughton, Ormskirk, Westhead, Old Skelmersdale

**Southport** – Formby, Birkdale, Southport, Scarisbrick, Burscough, Parbold, Newburgh, Ashurst

**Wigan** – Hawkley, Winstanley, Goose Green, Marus Bridge, Pemberton, Orrell, Upholland, Digmaor, Tanhouse

Please ask in Learner Services for further details:  
**01695 52393 / ask-the-adviser@westlancs.ac.uk**  
*\*subject to eligibility and availability*



West Lancashire College & NCG West Lancashire College is proud to be part of NCG, one of the country's leading college groups. We are one of seven colleges across the country that make up NCG, meaning we're a key part of providing education and training to learners, apprentices, and employers across the UK. NCG's mission is to enable social mobility and economic prosperity through exceptional education. This mission sits at the heart of West Lancashire College and every college in our group plays an important role in achieving it. Through ambitious teaching, innovative courses, and outstanding learning environments, NCG and all of its colleges aim to inspire excellence, spark curiosity, and make a real impact on our learners and communities. Being part of NCG enables all seven colleges to work collaboratively to achieve these goals. Separately, we each work in close partnership with employers and local industry to offer education and skills training that leads to real employment opportunities for our learners and makes strong local economic impact. Together, we share expertise, support each other to grow, help each other to innovate and accomplish real change for young people, communities, and economies across the country. [www.ncgrp.co.uk](http://www.ncgrp.co.uk)

## DISCLAIMER

Information and courses published in this guide is intended for guidance purposes only and does not constitute a contract.

West Lancashire College makes every effort to ensure that the information on courses given in this guide is up-to-date and accurate. However, the information may be subject to change, and we do not guarantee its accuracy. NCG and West Lancashire College do not accept any liability for omissions, errors, or changes.

We reserve the right to review or amend entry requirements for any of our courses.

On occasion, it is necessary to move or withdraw courses owing to a variety of reasons. The College cannot, therefore, guarantee the provision of all courses advertised in this guide. Where a course is removed or amended, the college will make every effort to transfer students to a suitable and available alternative course.

Where applicable, we follow the guidelines set by funding authorities. Fees are subject to status and may change at short notice due to circumstances beyond our control. The fees payable are those in force at the time of enrolment, which supersedes any that may previously have been advertised.

West Lancashire College Skelmersdale,  
Lancashire WN8 6LH

[www.westlancs.ac.uk](http://www.westlancs.ac.uk)  
[enquiries@westlancs.ac.uk](mailto:enquiries@westlancs.ac.uk)  
**01695 52300**



**BIBAS**  
Winner



West  
Lancashire  
College



BOOK YOUR PLACE

Ready to  
take the  
next  
step!

# OPEN EVENTS

Monday 3rd February 2025  
Thursday 1st May 2025  
4.30pm-7pm

West Lancashire College,  
College Way, Skelmersdale WN8 6LH

01695 52300 / [enquiries@westlancs.ac.uk](mailto:enquiries@westlancs.ac.uk) / [westlancs.ac.uk](http://westlancs.ac.uk)

Register your place at [Eventbrite.co.uk](https://www.eventbrite.co.uk)

